

STURGES
LONDON

Merchant Square, Paddington Basin, London
£7,150 Per calendar month



- Stunning south facing 3 Bedroom apartment
- Interior designed
- On the 5th floor of this prestigious building
- Features CCTV, Digital TV, Video Entry
- Available furnished or unfurnished
- Concierge, Lifts, Parking, Porter and Shops
- Secure underground parking
- Excellent transport links including the Elizabeth Line



STURGES
LONDON



, London

The stunning south facing interior designed apartment is situated on the fifth floor of this prestigious building which features concierge service, lift service, and secure underground parking.

The apartment comprises spacious living and entertaining space with a beautiful reception room including superb views over the Grand Union Canal, a superb modern fitted open plan kitchen, three bedrooms, a family bathroom, guest cloakroom and ample storage space.

The apartment offers easy access to superb transport links such as Paddington Train Station (Elizabeth Line, Bakerloo, Hammersmith & City, Circle, District lines and Heathrow Express) and Edgware Road (Circle, District and Bakerloo lines).

Local Authority:

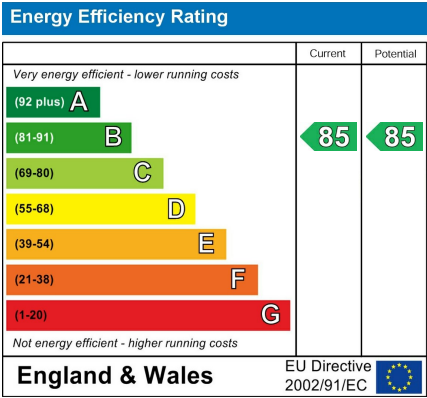
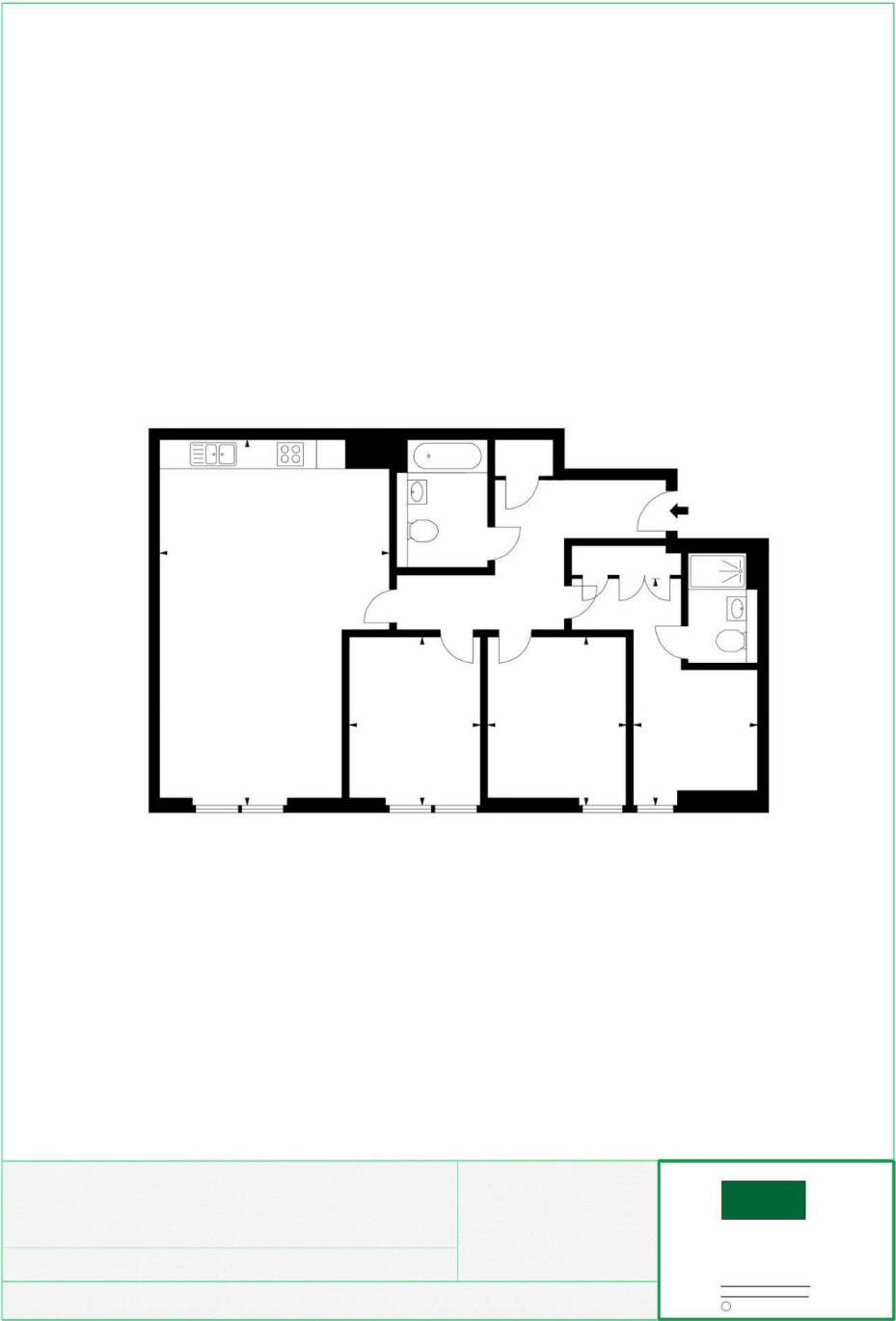
Council Tax Band: E

Lease: Add text here

Service Charges: Add text here

Ground Rent: Add text here

STURGES
LONDON



For more information, please contact:

(Tel) 020 3393 2002
(Email) hello@sturgeslondon.co.uk

668 Fulham Road, Parsons Green, London, SW6 5RX

sturgeslondon.co.uk

Agents Note: Whilst every care has been taken to prepare these particulars, they are for guidance purposes only. All measurements are approximate and for general guidance purposes only and whilst every care has been taken to ensure accuracy, they should not be relied upon and potential buyers/tenants are advised to recheck the measurements.